

# TCMFX CO<sub>2</sub> LED



Article	: TCMFX CO <sub>2</sub> LED
Article Code	: TCM357
Version	: 1.0
Date	: 18-07-2017

## Foreword

Thank you for purchasing the TCM<sub>FX</sub> CO<sub>2</sub> LED.

The Confetti Maker is manufacturer of biodegradable, colorfast and fireproof confetti products and special effects.

The products we manufacture are used for various events, such as concerts, opening ceremonies, sporting events and theater show productions. With our products your party is guaranteed to be a great success.

### **“We create experiences”**

This manual describes the TCM<sub>FX</sub> CO<sub>2</sub> LED.

All information in this manual is important for the safe and proper functioning of the TCM<sub>FX</sub> CO<sub>2</sub> LED.

Please read the manual carefully if you are not familiar with this device.

The Confetti Maker wishes you lots of fun with your purchase!

© Copyright 2017 the Confetti Maker FX®. This manual and its content is copyright of the Confetti Maker FX®. All rights Reserved.

No part of this manual may be reproduced or transmitted in any form or by any means including photocopying and recording without the written permission of the copyright holder.

The Confetti Maker Reserves the right to make any changes without direct knowledge of the customer.

Please contact your supplier for additional information regarding maintenance and repair.

This user manual has been written with care and attention to detail; however, should you find any errors or omissions, please contact your supplier and inform them of your findings.

Please be aware that The Confetti Maker FX® shall not be held liable by the user for any

## Specifications

Dimensions:	24.8 x 23.8 x 45.4 (L x B x H)
Dimensions tube:	D5.0 x 20.4
Weight:	4.54Kg
Voltage:	230V AC 50Hz
Power:	130W
Input:	Co2

## Assembly

Connect the blue Powercon cable to the CO2 LED to power the device.



Connect the DMX cable to the DMX in connector.  
Connect the other end of the DMX cable to the DMX Controller.



### Testing the CO2 LED

(Default) The first three channels represent Red, Green and Blue. Set the sliders to 100%.

The fourth channel represents the safety channel. Set the fourth slider to 50% (85 to 170) to enable the safety.

The CO2 LED is now ready to fire.



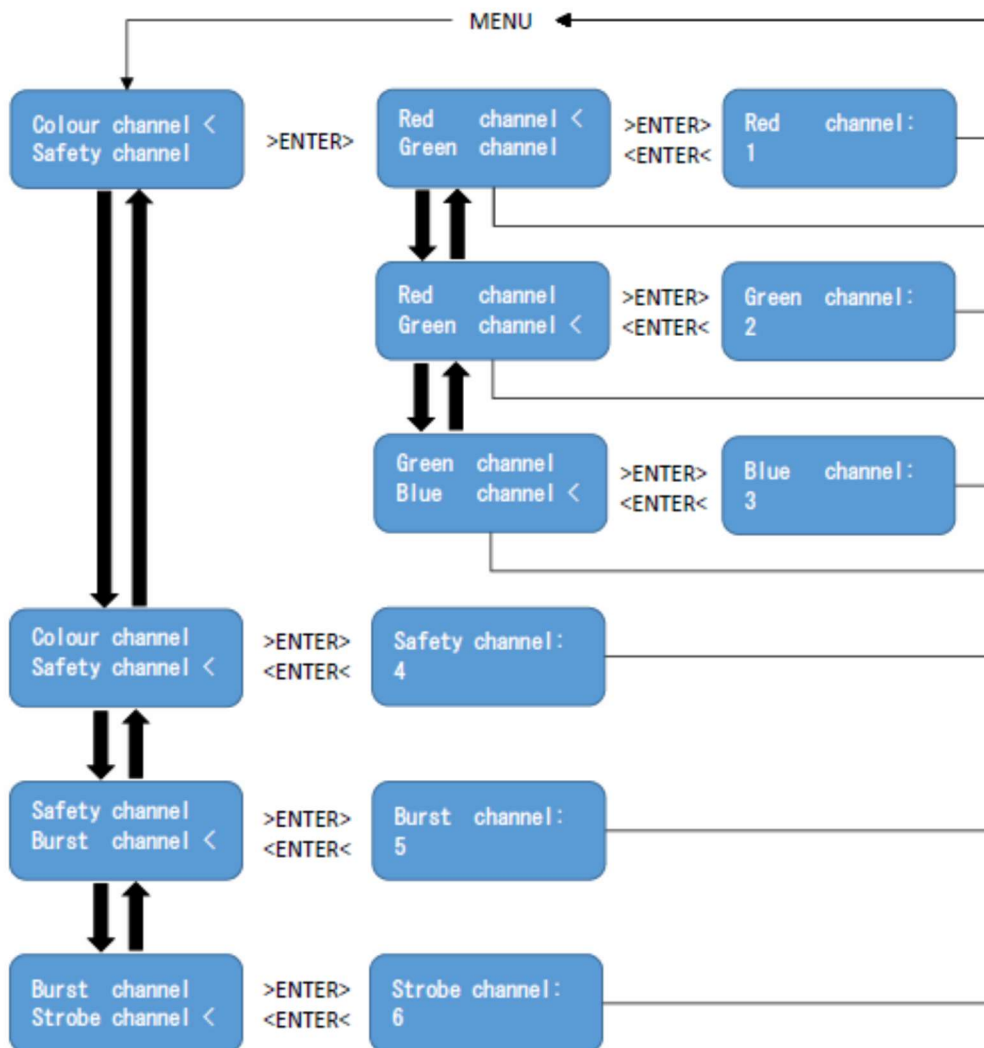
(Default) The fifth channel represent the burst channel. This channel enables the LED to burn continuously for max 10 seconds.



(Default) The sixth channel represent the strobe channel. This channel enables the LED to strobe for max 10 seconds.



## Selecting the Channel



## CO<sub>2</sub>

The CO<sub>2</sub> LED can be connected with different types of gas bottles.  
With the 22,5kg bottle you can shoot up to 60seconds.  
With the 37,5kg bottle you can shoot up to 90seconds.

## Accessories

The CO<sub>2</sub> LED is provided with Co<sub>2</sub> through a hose that is connected to a gas cylinder.

The CO<sub>2</sub> hoses are for sale and rent in various lengths.

- 5m
- 10m
- 15m



## CO<sub>2</sub> Hose

The CO<sub>2</sub> Hose supplies the Co<sub>2</sub> LED with CO<sub>2</sub>. Connect male plug to the CO<sub>2</sub> gas bottle.  
Connect the female plug to the CO<sub>2</sub> Jet.



## Quick Connector

With the Quick connector a CO<sub>2</sub> hose can easily be connected to a CO<sub>2</sub> bottle.  
Screw the Black side of the Quick connector on to the CO<sub>2</sub> bottle. Plug the other side of the connector to the male side of the CO<sub>2</sub> hose.





### **DMX Controller**

*The DMX Controller is used to control all TCM DMX Devices.*



### **DMX Cable**

*Connect the Male side of the DMX Cable to the CO<sub>2</sub> LED. Connect the Female side of the DMX Cable to the DMX Controller.*



### **Loop Through Cable**

*The function of the loop through cable is supplying multiple devices with a single power socket. Looping through the device should only be done without power. The first CO<sub>2</sub> LED is connected to a power socket with the power socket to Powercon cable. The second CO<sub>2</sub> LED is powered with the blue Powercon connector on the loop through cable. The grey side of the loop through cable connects to the grey connector on the first CO<sub>2</sub> LED. Connect the Powercon by plugging the Powercon into the connector on the CO<sub>2</sub> LED and turning it clockwise until you hear a click sound. Repeat this process for the rest of the CO<sub>2</sub> LEDs.*



### **Power Socket to Powercon cable**

*The power socket to Powercon cable is the power cable of the CO<sub>2</sub> LED. The power socket side connects to 230V 50-60HZ. The power connector connects to the CO<sub>2</sub> LED. Connect the Powercon by plugging the Powercon into the CO<sub>2</sub> LED and turning it clockwise until you hear a click sound.*

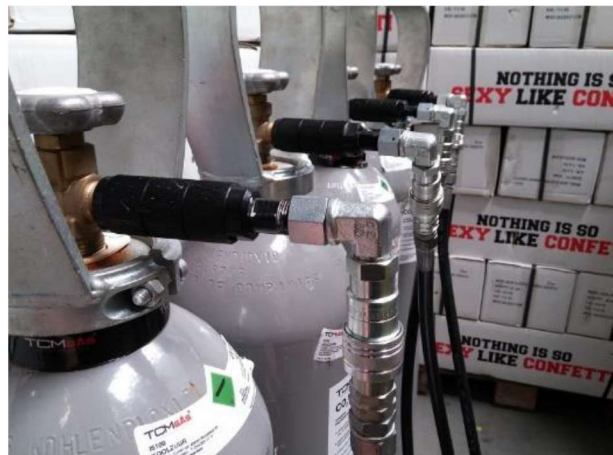
### **CO<sub>2</sub> Connection**

#### **Step 1**

Mount the bottle connectors to the CO<sub>2</sub> cylinders and make sure they are tightened securely.

#### **Step 2**

Connect the male end from the 3/8" CO<sub>2</sub> hose to the 3/8" female end of the bottle connector.





Step 3

Connect the female end from the 3/8" CO<sub>2</sub> hose to the male 3/8" of the CO<sub>2</sub> LED.



**CAUTION! HIGH PRESSURE!**  
**KEEP A SAFE DISTANCE OF AT LEAST 3 METERS!**  
**TEST THE CO<sub>2</sub>LED BEFORE USE**  
**USE THE CO<sub>2</sub>LED AT OWN DISCRETION.**  
**THE CONFETTI MAKER IS NOT RESPONSIBLE FOR ANY**  
**DAMAGE DONE TO THIRD PARTYS.**



### Warranty

The CO2 LED has a 3 year warranty which will be void if the CO2 LED is handled differently than described in this manual.

The warranty is void when the CO2 LED has been opened by anyone other than the Confetti Maker.

The Confetti maker is not responsible for any paint or hardware damaged as a result of rough handling.



**CAUTION!** Always contact your supplier in case of malfunctions.  
Never try to repair the CO2 LED yourself.



## WARNING

**READ THIS DOCUMENT BEFORE INSTALLING OR USING CO2 LED**

**IMPROPER SELECTION, IMPROPER USE, USE BY ANYONE OTHER THAN TRAINED USERS HAVING APPROPRIATE TECHNICAL EXPERTISE OF THE CO2 LED CAN CAUSE DAMAGE TO EQUIPMENT OR PROPERTY.**

This document and other information from the CO2 LED, its subsidiaries and authorized distributors together only provide product installation guidelines and product or system usage options, each of which are intended to operate in conjunction with further investigation by trained users having appropriate technical expertise to facilitate the safe handling and use of the CO2 LED. The CO2 LED is not intended to be used or handled by any users other than trained users having appropriate technical expertise. The information and documentation contained in our catalog and on the website, [www.theconfettimaker.com](http://www.theconfettimaker.com), is only provided for technical illustration purposes only and may not be used or relied upon as a statement of suitability for use in any particular application. Users, through their own analysis and testing, are solely responsible for assuring that the CO2 LED is used in

a safe and intended manner with all performance, endurance, maintenance, safety and warning requirements necessary for safe application being met.